



# PERISIGHT

Night & day vision enhancer for vehicle



- 360° Land Situational Awareness (LSA)
- Driver Vision Enhancer (DVE)
- Multiple compact optronics modules
- Operational in extreme driving conditions
- Ruggedized system, compliant with MIL-STD



# PERISIGHT®

## Night & Day Vision Enhancer for Vehicle

PeriSight® is a **network of imaging sensor modules** offering multiple viewing channels - color low light and thermal. The system provides **night and day 360° surveillance** in short range to enhance **Land Situational Awareness (LSA)**.

Patented smart low light/thermal fusion allows **Driver Vision Enhancement (DVE)**. Fully digital, PeriSight® enables additional key features such as shared user video stream, electronic stabilization, automatic detection and target tracking.

Developed to meet customers requirements, PeriSight® is compatible with any kind of vehicle.

## Compact modular Optronics system in 4 steps:

### 1- MODULES DEFINITION

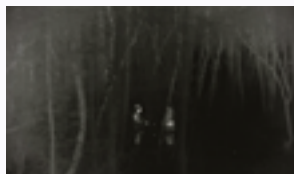
PeriSight® imaging sensor modules include colour low light and thermal sensors. Field Of Views are adapted on the application.



#### COLOUR LOW LIGHT

A state-of-the-art colour imaging sensor provides a first image in extreme low light conditions (~10 mlx) without additional illumination

POWERED BY **PHOTONIS**



#### THERMAL

A high-resolution thermal sensor provides the detection of people in any night conditions (up to night 5).

### 2- VEHICLE POSITIONING EXPERTISE

Bertin Instruments, in partnership with Optsys, provides expertise in selecting the modules to the user needs, the vehicle type and its environment.

RUGGEDIZED BY **OPTSYS**



### 3 - DATA PROCESSING SOLUTION

PeriSight® modules are wired to a single electronic housing (VigiSight® 65) allowing electronic stabilization, automatic detection and tracking.



### 4 - INTEGRATION SERVICES

Bertin Instruments provides full integration services of PeriSight® system. Videos are displayed on a screen, which is also used to control and command PeriSight®.



## Technical features

### MODULES

#### FISH-EYE

HFOV NIGHT: 180°

HFOV DAY: 180°

Day detection range:

515m\* / 218m\*\*

Night detection range:

240\* / 125m\*\*

#### WFOV

HFOV NIGHT: 105°

HFOV DAY: 94°

Day detection range:

980m\* / 537m\*\*

Night detection range:

410m\* / 233m\*\*

#### DVE

HFOV NIGHT: 57.3°

HFOV DAY: 53.8°

Day detection range:

1700m\* / 936m\*\*

Night detection range:

750m\* / 426m\*\*

#### THERMAL SENSOR

UC 8-12µm

640x480@17µm

#### VISIBLE SENSOR

CMOS Low Light Colour

1280x1024p

#### DIMENSIONS

< 20\*17\*21 cm

#### WEIGHT

< 3kg

#### VIDEO OUTPUT

25Hz - HD - Colour

\* 2,3m x 2,3m Vehicle  
\*\* 0,5m x 1,75m Person

## Optronics Range

Discover the other products of Bertin Instruments

### FUSION+SIGHT

Night & Day Vision Enhancer

