



# FUSION<sup>+</sup>SIGHT



## Night & day vision enhancer

- Full Digital, all-in-one device with 3 viewing modes: colour low light, thermal, smart fusion
- Night & day Detection, Recognition, Identification, up to 3 km
- Image recording, HD video output, wireless up & down communication
- GPS & Inertial Measuring Unit (IMU) allowing accurate designation



# FUSIONSIGHT®

## When the night becomes your ally

FusionSight® is a lightweight Night & Day Vision Enhancer combining two viewing modes, based on colour low light and thermal cameras, to use separately or in smart fusion.

## Applications

Especially adapted to the **infantry chiefs and special forces** requirements, this reliable handled device is efficient on the field during operations facing hidden and camouflaged enemies.

Drastically enhancing the detection of threats and targets of interest, FusionSight® is also a key device for **Police and Homeland Security** during investigation missions for quick or long-term surveillance tasks.

FusionSight® provides substantial support even under limited visibility conditions for search & rescue of missing persons and casualties under wreckage.

Fully digital and designed for users, FusionSight® allows **evidence pictures' snapshots** and **live streaming** on multiple interfaces, for long-term team operations.

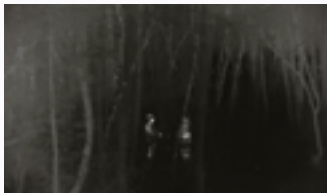


## Patented smart fusion



### COLOUR LOW LIGHT

A state-of-the-art colour imaging sensor provides a first image in extreme low light conditions (~10 mlx) without additional illumination  
POWERED BY **PHOTONIS**



### THERMAL

A high-resolution thermal sensor provides the detection of people in any night conditions (up to night 5).



### SMART FUSION

The embedded real-time image processing automatically selects the key information from each sensor to enhance field vision in night and day conditions.

DETECTION	Vehicle*	2950m
	Person**	806m
RECOGNITION	Vehicle*	990m
	Person**	269m
IDENTIFICATION	Vehicle*	490m
	Person**	134m

■ DAY ■ NIGHT

\*2,3m x 2,3m  
\*\*0,5m x 1,75m

## Optronics Range

Discover the other products of Bertin Instruments



Night & day 360° Land Situational Awareness system



## Technical features

### THERMAL SENSOR

UC (8-12µm)  
640 x 480 @17µm

### VISIBLE SENSOR

CMOS low light colour  
1280 x 1024p

### DISPLAY

OLED Full HD  
1280 x 1024

### NIGHT FOV

W: 32° / N: 8°

### DAY FOV

W: 29° / N: 7.25°

### AUTONOMY

7 hours

### WEIGHT

990 g

### EMBEDDED SENSORS

compass  
9-axes IMU and GPS

### EMBEDDED FUNCTIONS

image recording  
up & down wireless com.

### VIDEO OUTPUT

25Hz HD colour