

# RADTRACE



## Professional radiation dose rate meter

- Ultra-small and light weight
- Simple and intuitive handling
- Shock resistant
- Very fast response time (1 sec.)



# RADTRACE

## Gamma dose rate meter for workers subject to radiation exposure

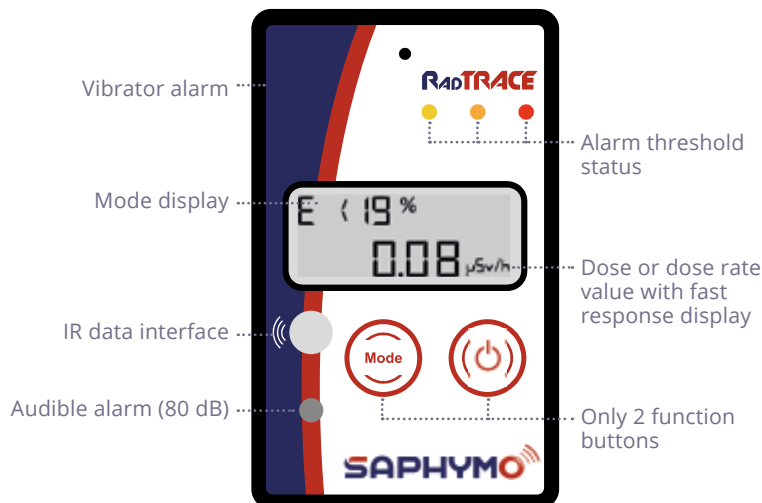
RadTRACE is a robust device equipped with an energy compensated GM tube able to measure the dose rate from 0,1  $\mu\text{Sv/h}$  to 100  $\text{mSv/h}$  with a **very fast response time (1 sec.)**. This **pocket size device** can also be used in a belt pouch or on a wall holder.

Simple and intuitive (with only 2 main modes), RadTRACE is suitable for any **professional application managed by expert or non-expert users**. It provides 3 types of alarm for exposure monitoring: visual (LED), acoustic and vibrations.

All data are saved and can be transferred to a computer through an IR interface.

RadTRACE is operating with ultra-low power technology **suitable for long time operations**. With only 3 AAA standard batteries, the autonomy will last up to 1.000 hours (about 125 days on a 8 hours/day basis). It is **adapted to harsh conditions**, from  $-20^{\circ}\text{C}$  to  $+50^{\circ}\text{C}$ .

## Easy to use, with immediate data visualization



### Accessories available:

communication kit, wall support, belt pouch, suitcase or plastic protective cover

## Technical features

### DETECTION PRINCIPLE

Energy-compensated GM tube

### MEASUREMENT RANGE

From 0,1  $\mu\text{Sv/h}$  to 100  $\text{mSv/h}$   
(from 10  $\mu\text{R/h}$  to 10  $\text{R/h}$ )

### SENSITIVITY

2.500 pulses per  $\mu\text{Sv}$

### ENERGY RANGE

From 48 keV to 2 MeV ( $\pm 40\%$ )

### DATA STORAGE

up to 650 dose rate values and accumulated dose

### ALARMS

Visual, acoustic and vibration,  
3 adjustable levels

### AUTONOMY

Up to 1.000 hours

### DIMENSIONS

71 x 26 x 110 mm

### WEIGHT

176 g incl. batteries

With the expertise of **SAPHYMO**

## Health physics devices

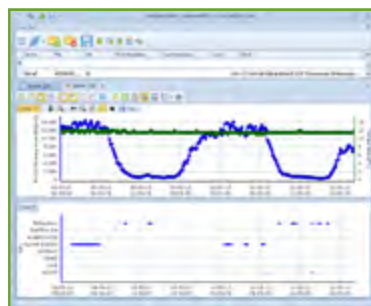
Discover other products of Bertin Instruments

**MINI TRACE**  
CSDF



Versatile multipurpose contamination and survey meter

## Easy data analysis



## DataVIEW Software

DataVIEW software is provided with the RadTRACE for easy data analysis. PRO version is available with additional features for professional applications.