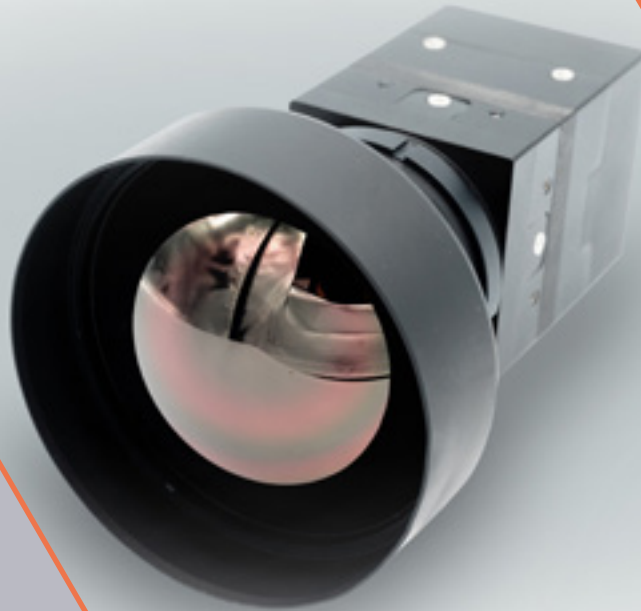


CamSight[®] HD



High Definition Low SWaP Thermal Camera

- Low Size, Weight and Power (SWaP)
- High definition LYNRED ATTO GEN2 sensor:
1280 x 1024@12 μ m pitch
- Freeze-free image delivery for an unmatched fluidity
- Patented shutterless technology
- Designed and manufactured in France
with French thermal sensors



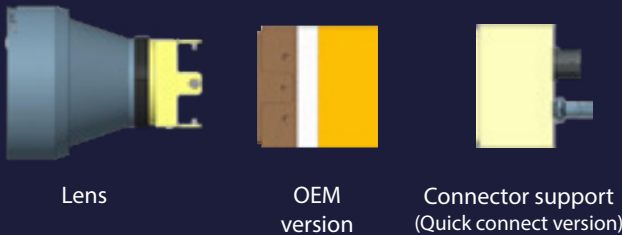
CAMSIGHT[®] HD

HIGH DEFINITION THERMAL CAMERA

Designed by Bertin Photonics, CamSight[®] HD is an Original Equipment Manufacturer (OEM) digital core camera ideal for embedding into complex optronic devices. Equipped with LYNRED's ATTO GEN2 infrared sensor, CamSight[®] HD provides the best thermal image resolution on the market, which allows for digital zoom.

CamSight[®] HD has you covered for any demanding applications such as ground or airborne intelligence, surveillance and reconnaissance.

Ultra-compact & ruggedized design for easy integration



Unrivalled thermal image quality



Discover the CamSight[®] family



CamSight[®] LP_(HS) CamSight[®] LS CamSight[®] On-demand

Packed with an unmatched set of features, CamSight[®] HD allows for real time, freeze-free image delivery over a wide range of light level conditions.

CamSight[®] HD OEM camera also exists in a Quick Connect version to meet any mission's or end user's requirements. Both versions are available with multiple lens configurations, adding flexibility to integrators and manufacturers.

Technical features

Sensor	ATTO GEN2 (by LYNRED) 1280 x 1024@12µm pitch
Bandwith	LWIR (8-12µm)
HFoV (°)	95 / 56 / 46 / 28 / 24 / 17 / 15 (More on demand)
NETD	< 50mK @ F#1/1.0
Consumption	< 2.8W
Video outputs	HD-SDI / GigE Vision
Time to image	< 3s
Dimensions	OEM: 31.5 x 40 x 40mm Quick Connect: 58.3 x 40 x 40mm
Weight	OEM: 83g Quick Connect: 128g