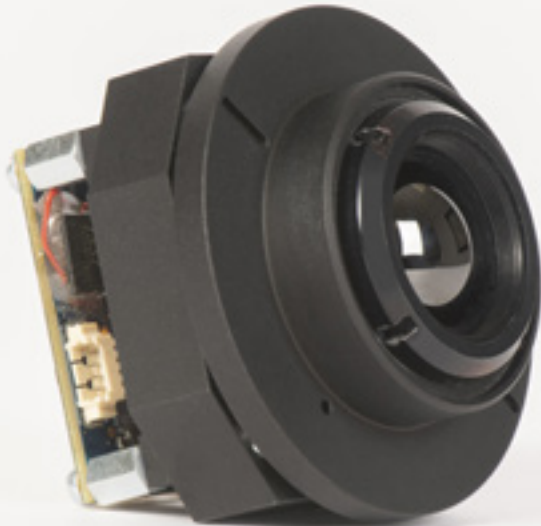


CamSight[®] LP_(HS)



Low-power LWIR imaging camera (High sensitivity)

- Low Size, Weight And Power (SWAP)
- Fast time to image: < 1.2s
- Patented uncooled shutterless technology
- Low latency
- High sensitivity : NETD < 30 mK
- Designed and manufactured in France with French thermal sensors



CAMSIGHT[®] LP_(HS)

OEM INFRARED CAMERA MODULE

CamSight[®] LP_(HS) is an Original Equipment Manufacturer (OEM) digital core camera produced by Bertin Photonics. This camera can be integrated within complex optronic systems.

Ultra-compact, CamSight[®] LP_(HS) is very low-power (less than 1 Watt) to be implemented even in constrained environments. The camera is equipped with the uncooled PICO GEN2(S) LYNRED infrared sensor.

Thanks to its design and high-performances, CamSight[®] LP_(HS) fulfills any surveillance applications and night & day infantry missions, even in harsh and constrained environments. It can also be integrated in autonomous vehicles (UAV, UGV, USV) or in Unattended Ground Sensor (UGS) systems.

The camera is available in two different versions, CamSight[®] LP_{HS} (NETD < 30 mK @ F# 1/1.0) and CamSight[®] LP (NETD < 50 mK @ F# 1/1.0).

Uncooled infrared sensor technology

CamSight[®] LP_(HS) is equipped with the well-known LYNRED sensor PICO GEN2(S), offering the following advantages:

- Robust, resistant to harsh environments
- Freeze-free image delivery for an unmatched fluidity
- Shutterless, no requirements for maintenance and calibration in operation

Versatile solution for surveillance and driver vision enhancement



- OEM version
- OEM version with 19mm lens
- Casing version with 19mm lens

Discover the CamSight[®] family



- CamSight[®] HD
- CamSight[®] LS
- CamSight[®] On-demand

Technical features

Sensor	PICO GEN2(S) (LYNRED) 640 x 480@17µm pitch
Bandwidth	LWIR (8-12µm)
HFoV (°)	90 / 57 / 32 / 25 / 18 / 11 / 10 / 8 (More on demand)
NETD - CamSight[®] LP	< 50mK @ F#1/1.0
NETD - CamSight[®] LP_{HS}	< 30mK @ F#1/1.0
Consumption	< 1W
Video outputs (Digital and/or analog)	SD-SDI / Progressive PAL GigE Vision
Time to image	< 1.2s
Dimensions	OEM version: 46 x 46 x 29mm Casing version: 60 x 60 x 65mm
Weight	OEM version: 60g Casing version: 188g