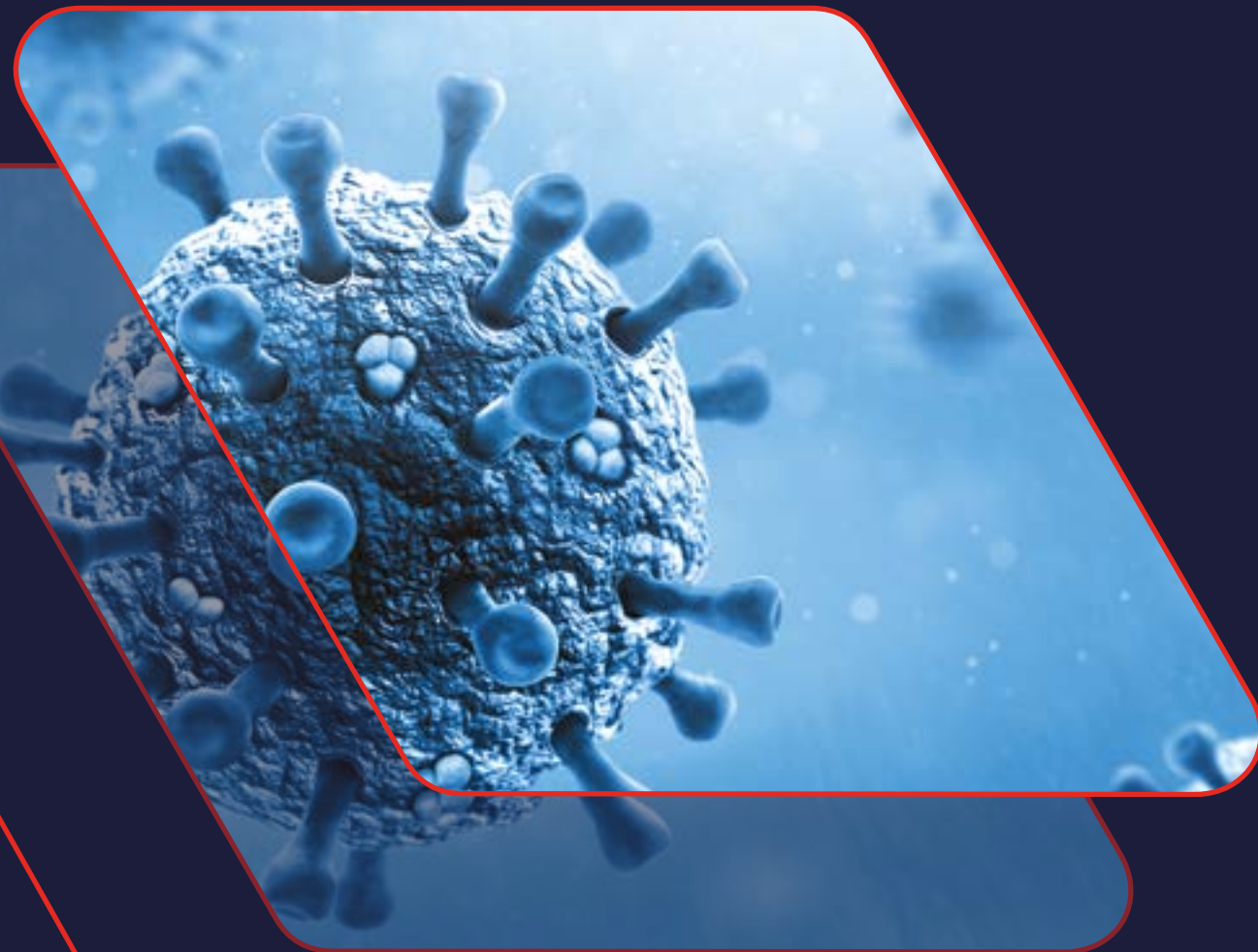
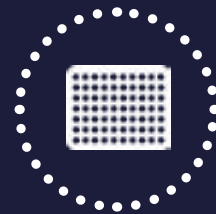


# BEC SARS-CoV-2 RT-LAMP SYSTEM



## Rapid field test for genome detection of SARS-CoV-2 virus

- Portative mobile system
- For environmental samples
- Results in less than 30 minutes
- Amplification of 2 targets

# BEC SARS-COV-2 RT-LAMP SYSTEM

BEC SARS-CoV-2 RT-LAMP system is designed for the **rapid detection of SARS-CoV-2** genome on the field. It is composed of reagent kits and a dedicated reading instrument. The tests have been developed by **Bertin Technologies and Enalees** to allow a **fast and easy molecular testing solution** during the Covid-19 pandemic. In **less than 30 minutes**, the operator will be able to test 2 samples. Thanks to its portability, the system offers flexibility and can be run on site. The environmental tests have a broad field of application as they can be used to monitor the virus in **any public location** such as airports, cruise ships, hallways, offices...



## APPLICATIONS



Air sample testing

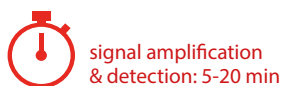
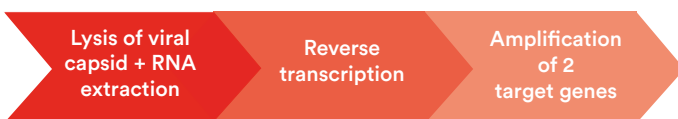


Decontamination monitoring

## PARTNERS



## TECHNOLOGY & PROCESS



## TECHNICAL FEATURES

### BEC SARS-CoV-2 RT-LAMP KIT for environmental samples (cat#P05302)

- 10 tests, as 5 sets of 2 tests
- Ready to use components
- Internal control: non natural DNA
- Status: Research Use Only

### BEC FIELD READER PACK

- BEC incubator reader (power supply AND battery)
- Smartphone with BEC app
- 1x25 µL micro pipette
- 1x100 µL micro pipette
- 1 box of filter tips
- Hard sample rack
- 1 container for sharp pointed or cutting objects, and infectious medical waste
- Heavy duty case

### The test uses licenses related to patents

WO 00/28082, WO 1/34790, WO 01/77317, WO 02/24902

## DISCOVER BERTIN'S SOLUTIONS



Coriolis  
Air Samplers

Bioreagent  
Biomarker detection

Precellys  
Sample preparation