

CamSight® HD



High Definition Low SWaP Thermal Camera

- Low Size, Weight and Power (SWaP)
- High definition LYNRED ATTO GEN2 sensor:
1280 x 1024@12µm pitch
- Freeze-free image delivery for an unmatched fluidity
- Patented shutterless technology
- Designed and manufactured in France
with French thermal sensors



CAMSIGHT HD HIGH DEFINITION THERMAL CAMERA

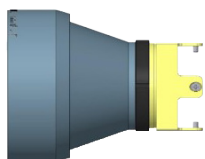
Designed by Bertin Winlight, CamSight HD is an Original Equipment Manufacturer (OEM) digital core camera ideal for embedding into complex optronic devices. Equipped with LYNRED's ATTO GEN2 infrared sensor, CamSight HD provides the best thermal image resolution on the market, which allows for digital zoom.

CamSight HD has you covered for any demanding applications such as ground or airborne intelligence, surveillance and reconnaissance.

Packed with an unmatched set of features, CamSight HD allows for real time, freeze-free image delivery over a wide range of light level conditions.

CamSight HD OEM camera also exists in a Quick Connect version to meet any mission's or end user's requirements. Both versions are available with multiple lens configurations, adding flexibility to integrators and manufacturers.

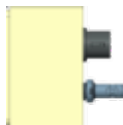
Ultra-compact & ruggedized design for easy integration



Lens



OEM version



Connector support (Quick connect version)

Unrivalled thermal image quality



Discover the CamSight family



CamSight LP_(HS)



CamSight LS



CamSight On-demand

Technical features

Sensor	ATTO GEN2 (by LYNRED) 1280 x 1024@12µm pitch
Bandwidth	LWIR (8-12µm)
HFoV (°)	95 / 56 / 46 / 28 / 24 / 17 / 15 (More on demand)
NETD	< 40mK @ F#1/1.0
Consumption	< 2.8W
Video outputs	HD-SDI / GigE Vision
Time to image	< 3s
Modes	Shutterless; Soft Shutter; Less Shutter
Dimensions	OEM: 40 x 40 x 31.5mm Quick Connect: 40 x 40 x 58.3mm
Weight	OEM: 83g Quick Connect: 128g