



TOTAL RNA EXTRACTION FROM CARTILAGE TUMORS

Quality Control Platform of Nucleic Acids, Programme Carte d'Identité des Tumeurs (CIT), Ligue Nationale Contre le Cancer, Paris, France.

/ CONTEXT

Our platform is specialized in extraction of nucleic acids from tumoral tissues intended to be analyzed by microarray and sequencing. In this study, nucleic acids have been extracted from important series of cartilage tumors. Although DNA extraction from cartilage samples is common, the extraction of high quality RNA is still a challenge. In this way, the Precellys Dual was evaluated to increase quality of extracted RNA from cartilage tumors.

/ MATERIALS

- Precellys Dual homogenizer.
- Precellys lysing kit: 03961-1-007 (CK28R).
- Sample: 50 to 100 mg cartilage tumors (chondrosarcoma).
- Buffer: 1 ml TRIzol Reagent (Invitrogen) + 200 μ l Guanidine thiocyanate 4M (SIGMA).
- miRNeasy Mini kit (Qiagen).

/ PROTOCOL

Precellys Dual: 6500 rpm, 3x15sec, 10s break.

Subsequent RNA extraction and purification was done as described previously [1].

Verification of RNA quality: Agilent 2100 Bioanalyzer (Agilent Technologies).

/ CONCLUSION

The Precellys Dual is successfully validated for total RNA extraction from cartilage tumors. It provides better homogeneity in grinding of hard tissue as cartilage and so, increases quality and quantity of total RNA extracted. Moreover, the Precellys Dual is easy to use, simple, efficient and much faster than former methods.

/ RESULTS

Qualification of RNA and miRNA is based on some criteria as 28s/18s ratio, RIN and Agilent 2100 Bioanalyzer profiles. Figures 1 and 2 show the results of RNA and miRNA qualifications extracted from a cartilage tumor. Characteristics of total RNA are reported in Table 1. RNA and miRNA quality and integrity are optimal to microarray and sequencing analysis.

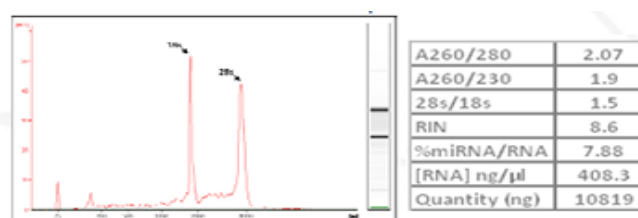


Figure 1: Profile of RNA extracted from a cartilage tumor on Agilent 2100 Bioanalyzer. Table1: Characteristics of total RNA extracted from a cartilage tumor.

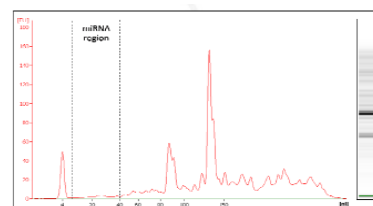


Figure 2: Profile of miRNA extracted from a cartilage tumor on Agilent 2100 Bioanalyzer.

/ CUSTOMER

